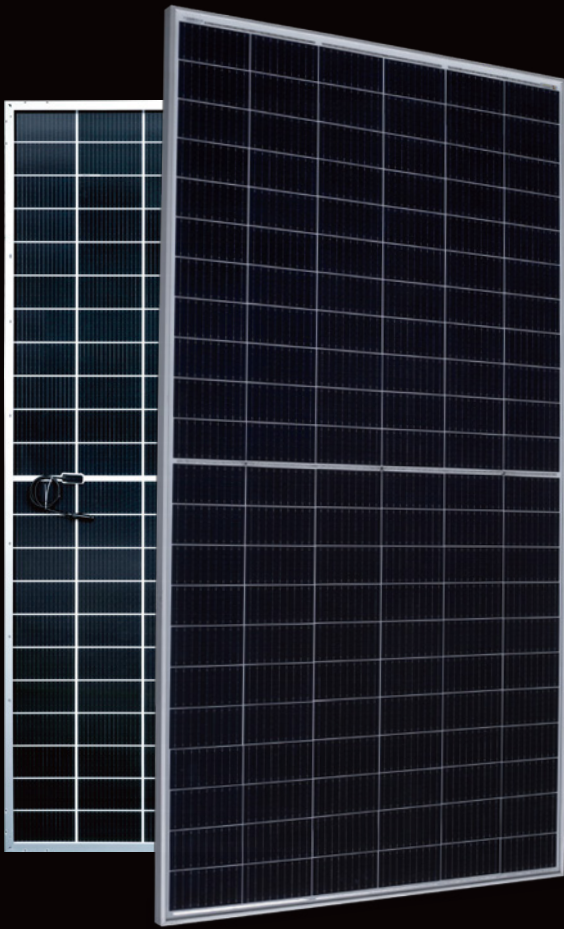




# AESOLAR

since 2003



# COMET

enrich your energy yield

**30**  
years  
Performance  
Warranty

**15**  
years  
Product  
Warranty

## 680W-700W

### AE TME-132BDS Series

SILICON HETEROJUNCTION PV MODULES  
HALF-CUT CELLS • BIFACIAL • DOUBLE-GLASS

[www.ae-solar.com](http://www.ae-solar.com)

Ver. 24.1.1



HALF  
CELLS



CELL  
SIZE



LID  
RESISTANT



PID  
RESISTANT



SALT CORROSION  
RESISTANT



SAND  
RESISTANT



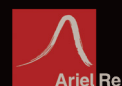
AMMONIA  
RESISTANT



HIGHLY STABLE  
AND TOUGH



IEC 61215 IEC 61730  
Regular Production Surveillance  
[www.tuv.com](http://www.tuv.com)  
ID 1111207249



# AE TME-132BDS Series 680W-700W



SILICON HETEROJUNCTION PV MODULES  
HALF-CUT CELLS • BIFACIAL • DOUBLE-GLASS

## Mechanical and design specification

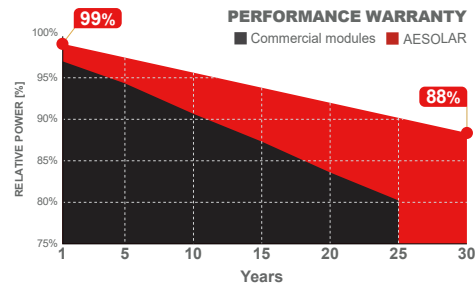
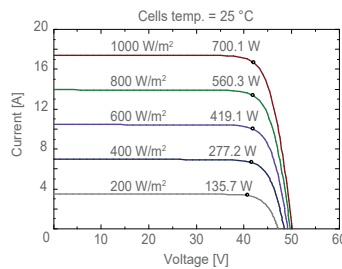
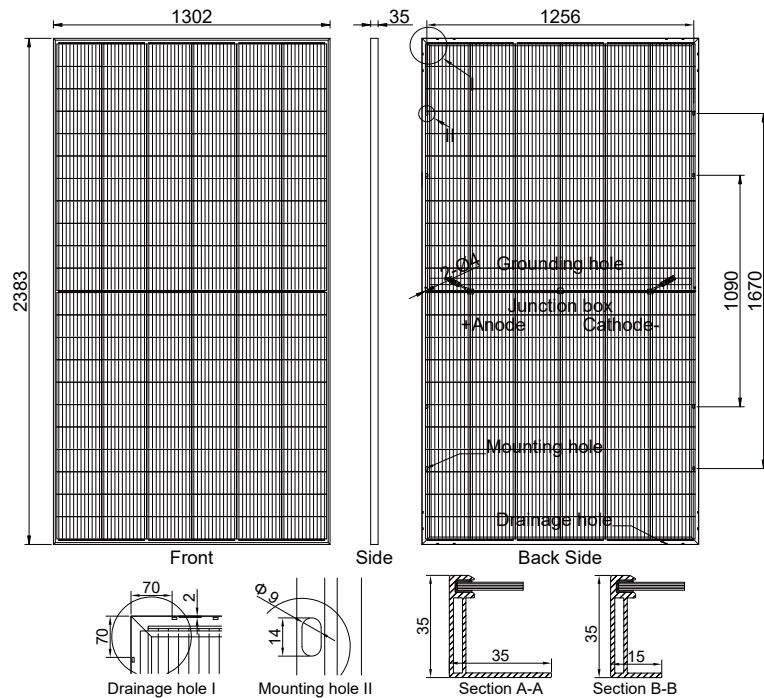
|                 |   |
|-----------------|---|
| Cell type       | Silicon Heterojunction Technology, Half-cut cells, 210 mm |
| No. of cells    | 132   |
| Bifaciality     | 80 ± 5%   |
| Front cover     | 2.0 mm glass, high transmission, AR coated, tempered      |
| Encapsulation   | POE   |
| Back cover      | 2.0 mm white glazed glass, tempered                       |
| Junction box    | IP68 rated, 3 Bypass Diodes                               |
| Frame           | 35 mm anodized Aluminium alloy                            |
| Cable           | 1 x 4 mm <sup>2</sup> , 350 mm length or customized       |
| Connectors      | MC 4 / MC 4 compatible                                    |
| Dimension       | 2383 mm x 1302 mm x 35 mm                                 |
| Weight          | 38.5 kg   |
| Hail resistance | Max. Ø 25 mm at 23 m/s                                    |
| Wind load       | 2400 Pa or 244 kg/m <sup>2</sup>                          |
| Snow load       | 5400 Pa or 550 kg/m <sup>2</sup>                          |

## Packaging information

|                         |                                       |
|-------------------------|---------------------------------------|
| Packaging configuration | 31 pcs / pallet                       |
| Loading capacity        | 558 pcs / 40 HQ                       |
| Size / Pallet           | 1350 mm x 1100 mm x 2520 mm (upright) |
| Weight                  | 1332 kg / pallet                      |

## Temperature ratings

|                                      |        |            |
|--------------------------------------|--------|------------|
| Operating temperature                | (°C)   | -40 to +85 |
| Temp.coefficient of P <sub>max</sub> | (%/°C) | -0.26      |
| Temp.coefficient of V <sub>oc</sub>  | (%/°C) | -0.24      |
| Temp.coefficient of I <sub>sc</sub>  | (%/°C) | 0.040      |
| Nom. operating temp. NOCT            | (°C)   | 44 ± 2     |



## Electrical specifications (STC\*): AE680TME-132BDS AE685TME-132BDS AE690TME-132BDS AE695TME-132BDS AE700TME-132BDS

|                            | AE680TME-132BDS       | AE685TME-132BDS | AE690TME-132BDS | AE695TME-132BDS | AE700TME-132BDS |       |
|----------------------------|-----------------------|-----------------|-----------------|-----------------|-----------------|-------|
| Nominal Max. Power         | P <sub>max</sub> (Wp) | 680             | 685             | 690             | 695             | 700   |
| Maximum operating voltage  | V <sub>MPP</sub> (V)  | 41.49           | 41.65           | 41.80           | 41.95           | 42.10 |
| Maximum operating current  | I <sub>MPP</sub> (A)  | 16.39           | 16.45           | 16.51           | 16.57           | 16.63 |
| Open-circuit voltage       | V <sub>oc</sub> (V)   | 49.50           | 49.66           | 49.82           | 49.98           | 50.13 |
| Short-circuit current      | I <sub>sc</sub> (A)   | 17.19           | 17.25           | 17.31           | 17.37           | 17.43 |
| Module efficiency          | η (%)                 | 21.92           | 22.08           | 22.24           | 22.40           | 22.56 |
| Power tolerance            | (W)                   |                 |                 | 0~+5            |                 |       |
| Maximum system Voltage     | (V)                   |                 |                 | 1500            |                 |       |
| Maximum series fuse rating | (A)                   |                 |                 | 35              |                 |       |

\*STC: Standard test conditions (Irradiance 1000 W/m<sup>2</sup>, Cell temperature 25°C and air mass of AM1.5), measurement tolerance P<sub>max</sub>: ±3%

## Electrical specifications (NMOT\*): AE680TME-132BDS AE685TME-132BDS AE690TME-132BDS AE695TME-132BDS AE700TME-132BDS

|                           | AE680TME-132BDS       | AE685TME-132BDS | AE690TME-132BDS | AE695TME-132BDS | AE700TME-132BDS |       |
|---------------------------|-----------------------|-----------------|-----------------|-----------------|-----------------|-------|
| Nominal Max. Power        | P <sub>max</sub> (Wp) | 510             | 513             | 517             | 521             | 525   |
| Maximum operating voltage | V <sub>MPP</sub> (V)  | 38.90           | 39.04           | 39.18           | 39.32           | 39.46 |
| Maximum operating current | I <sub>MPP</sub> (A)  | 13.11           | 13.16           | 13.21           | 13.26           | 13.30 |
| Open-circuit voltage      | V <sub>oc</sub> (V)   | 46.36           | 46.54           | 46.71           | 46.89           | 47.06 |
| Short-circuit current     | I <sub>sc</sub> (A)   | 13.75           | 13.80           | 13.85           | 13.90           | 13.94 |

\*NMOT: Normal Module Operating Temperature (Irradiance 800 W/m<sup>2</sup>, Ambient temperature 20°C, air mass of AM1.5 and wind speed of 1 m/s)

The specifications and characteristics contained in this datasheet may deviate slightly from our actual products due to the product developments and uncertainty of measurement devices. The specifications included in the datasheet are subject to change without prior notice.